

ANDROID APP

CONTACT US



OPEN SOURCE HARDWARE PROJECTS

**electronics-lab**  
.com



Home / Projects / Test - Measurement / Simple LC Meter

PS5 & XBOX Series X Giveaway

## SIMPLE LC METER

By continuing to use the site, you agree to the use of cookies. [more info](#)

Accept




Hristo

xristost@yahoo.com

94773 Views

medium

Tested



**Safe,  
Reliable  
and  
Efficient**

NextPowerS3  
MOSFETs

POWER ON

PS5 & XBOX Series X giveaway

By continuing to use the site, you agree to the use of cookies. [more info](#)

Accept



This project is a simple LC meter based on PIC16F682A mcu.

PS5 & XBOX Series X Giveaway

By continuing to use the site, you agree to the use of cookies. [more info](#)

Accept



## DESCRIPTION

---

Here is another piece of laboratory equipment – LC meter. This type of meter, especially L m

Schematic of this one came from this web page:<https://sites.google.com/site/vk3bhr/home/i>

It uses PIC microcontroller 16F628A, and because I recently acquired a PIC programmer, I de  
the original schematic, PCB, source and HEX files for programing the microcontroller and de

### Here is my adaptation of the schematic:

I removed the 7805 regulator, because I decided to use a 5V adapter from Sony mobile phor

In the schematic, trimmer-potentiometer is 5k, but actually I put 10k, after consulting with  
tantalum and C7 – 100uF actually is 1000uF. Two 1000pF capacitors are styroflex 1% and  
30mA.

R11 limits the back light current and must be calculated according to the actual LCD mode

I used the original PCB as a starting point and modified it to suit better to my component

### Here is the result:

The last two pictures shows LC meter in action. In the first of them, there is 1nF/1% capacitance  
when I put the test leads there is 3-5 pF reading on display, but it is eliminated with the calib

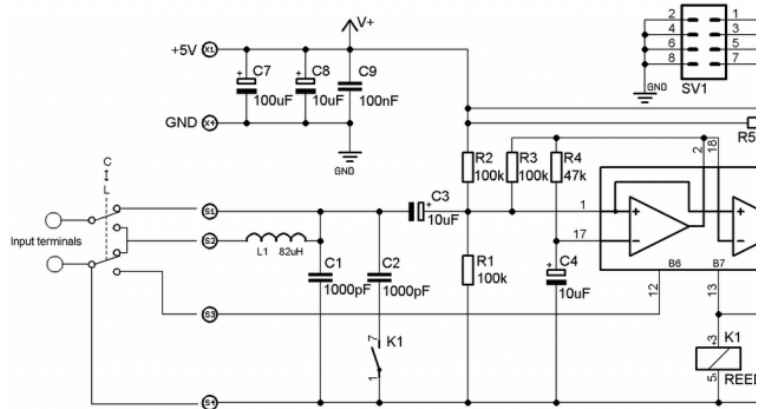
## SCHEMATIC

---

By continuing to use the site, you agree to the use of cookies. [more info](#)

Accept





PS5 & XBOX Series X Giveaway

By continuing to use the site, you agree to the use of cookies. [more info](#)

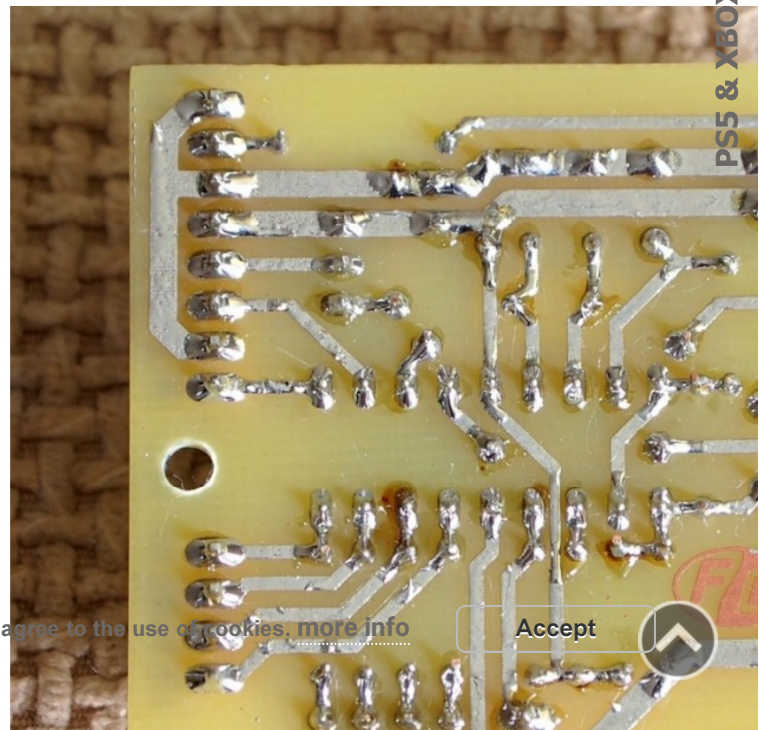
Accept



# PHOTOS



PS5 & XBOX Series X Giveaway



By continuing to use the site, you agree to the use of cookies. [more info](#)

Accept

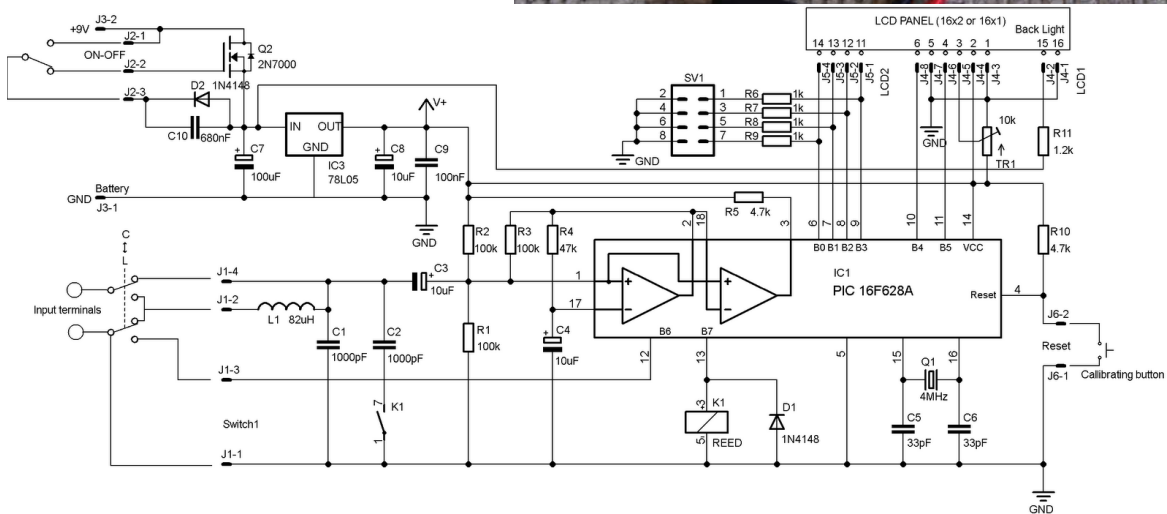
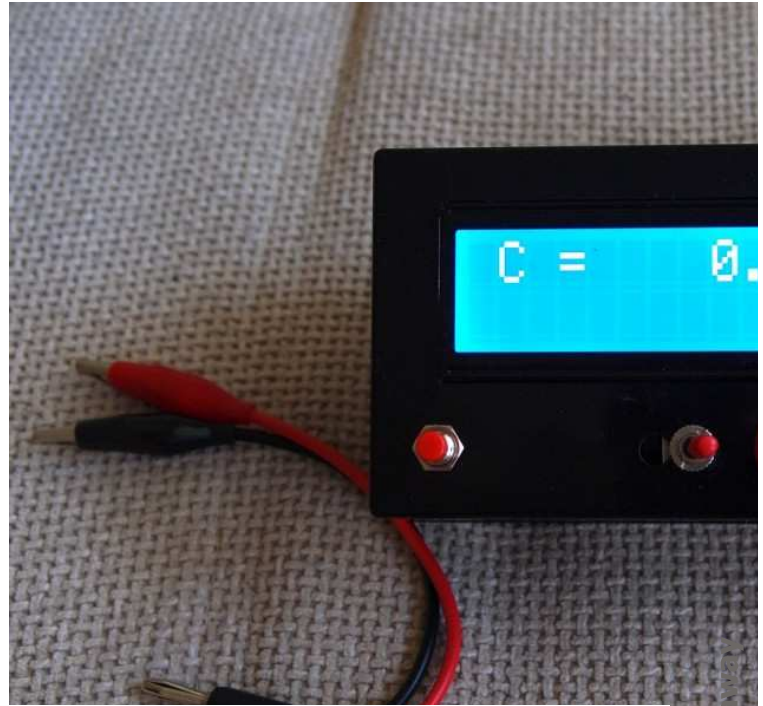




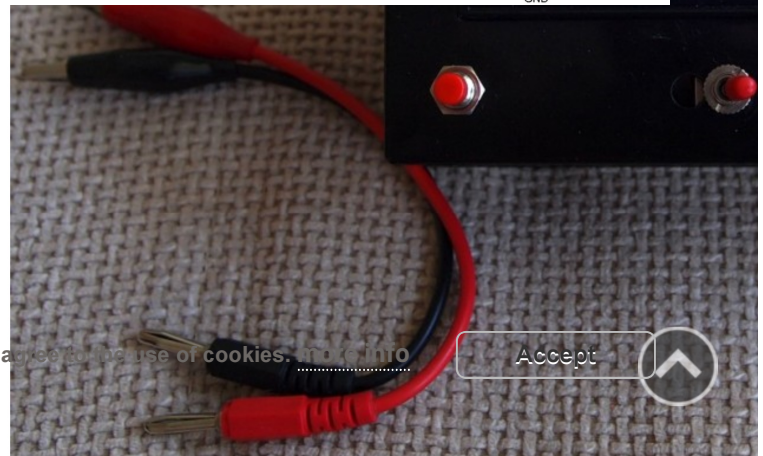
By continuing to use the site, you agree to the use of cookies. [more info](#)

Accept:





Item 10 of 14

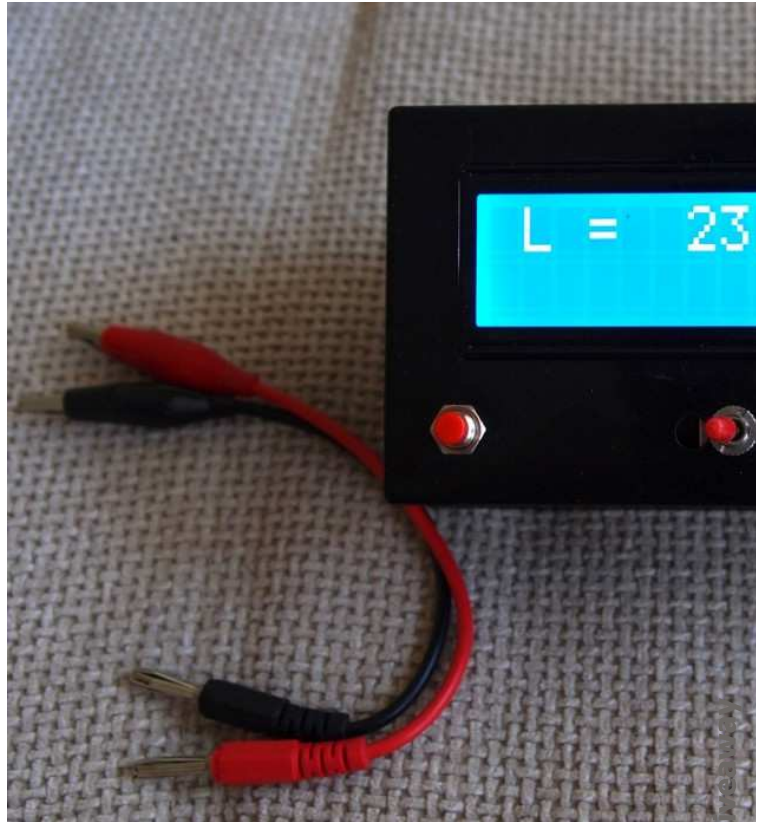


By continuing to use the site, you agree to the use of cookies. [Info](#)

Accept







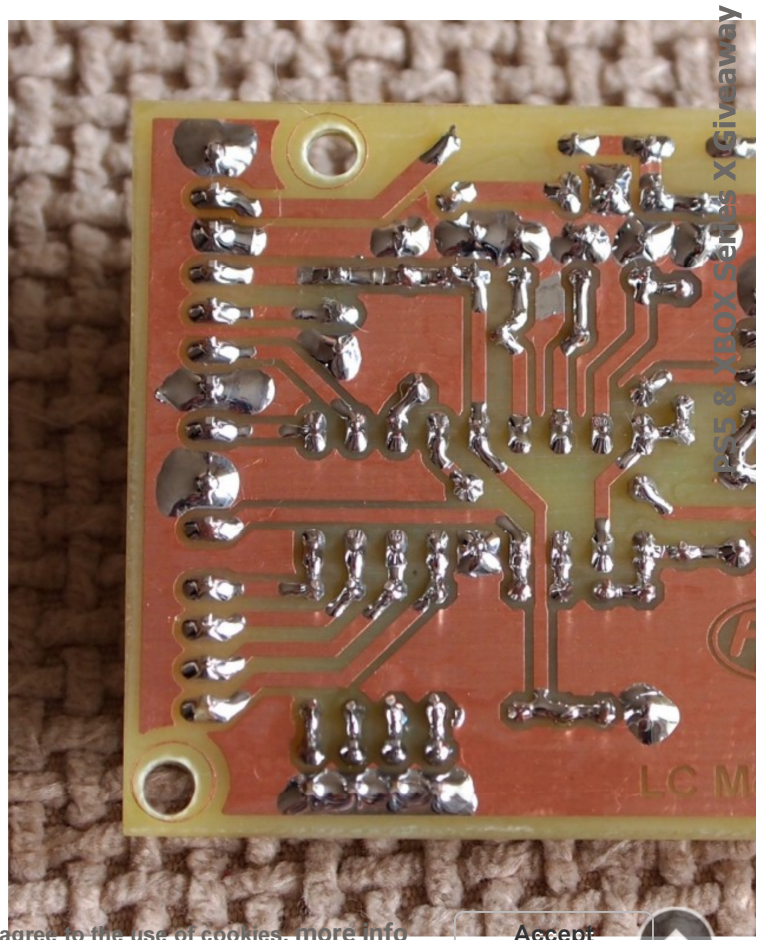
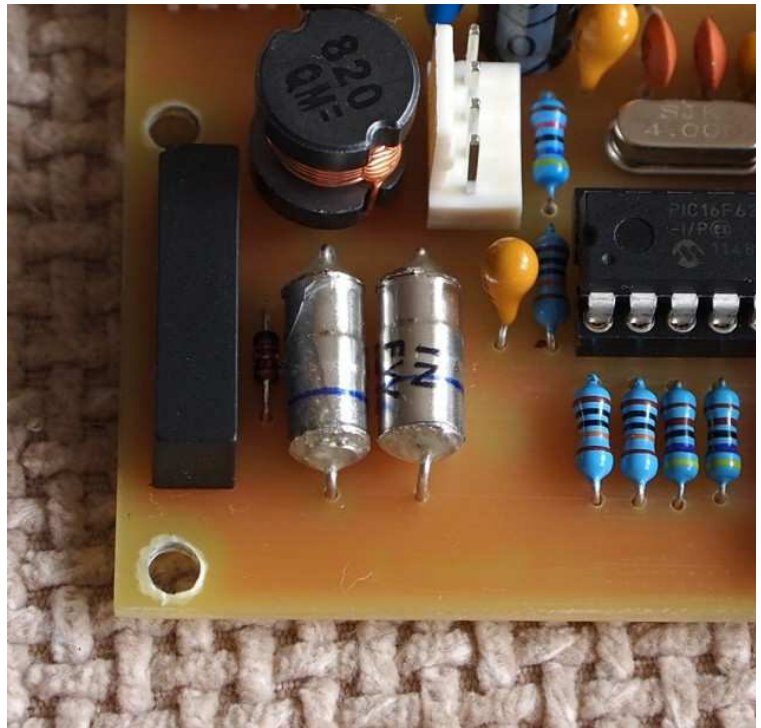
PS5 & XBOX Series X Game Console

By continuing to use the site, you agree to the use of cookies. [more info](#)

Accept







By continuing to use the site, you agree to the use of cookies. [more info](#)

Accept



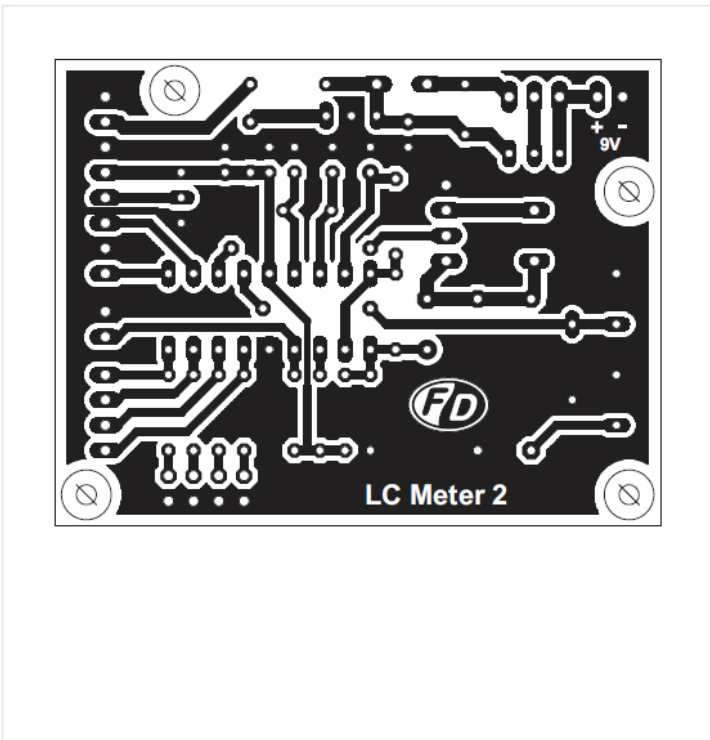
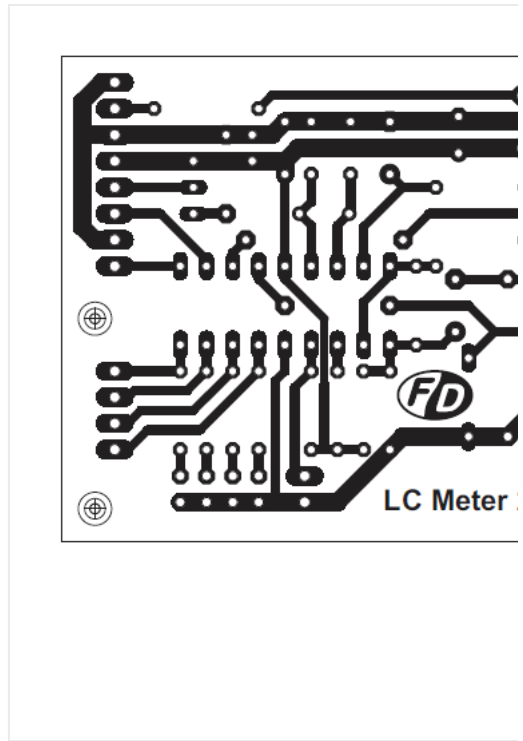
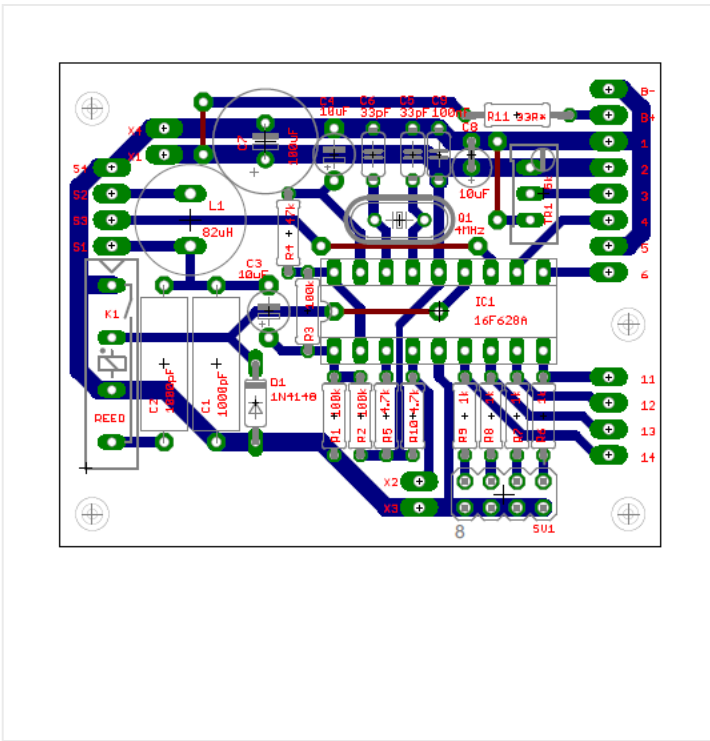


## PCB

By continuing to use the site, you agree to the use of cookies. [more info](#)

Accept





PS5 & XBOX Series X Giveaway

By continuing to use the site, you agree to the use of cookies. [more info](#)

Accept



## DOWNLOADS

- [LCmeter\\_schematic.pdf](#)
- [LCmeter\\_elements-side.pdf](#)
- [LCmeter\\_copper-side.pdf](#)
- [LCmeter\\_mirrored-copper-side.pdf](#)
- [LC\\_Meter\\_with\\_PS\\_schematic.pdf](#)
- [LC\\_Meter\\_with\\_PS\\_elements-side.pdf](#)
- [LC\\_Meter\\_with\\_PS\\_copper-side.pdf](#)
- [LC\\_Meter\\_with\\_PS\\_mirrored-copper-side.pdf](#)
- [lc2a.hex](#)

[Share On Facebook](#)

[Share On Twitter](#)

[Share On LinkedIn](#)

[Share On Google Plus](#)

## [JLCPCB - Only \\$2 for PCB Prototyping](#)

[24 Hours fast turnaround, Excellent quality](#)

**\$18 Welcome Bonus for new registrations**

PS5 & XBOX Series X Giveaway



**PCBWay** Only \$30

- Free shipping
- Free stencil

By continuing to use the site, you agree to the use of cookies. [more info](#)

Accept



## COMMENTS

---

**Pingback :**

**6 Pole Multiple Way Switch For Digital Data, How To?**

[...] I want to combine two pic projects into one but using a single LCD module. The p  
<http://homepage.eircom.net/~ei9gq/counter.html> There are 6 connections in the C

5 years ago

[Reply](#)

---



**Rana**

Where is the code or hex file for PIC 16F628A ???

5 years ago

[Reply](#)

---



**Electronics Lab**

You should find it on the original project link here: <https://sites.google.com/site/vk3t>

By continuing to use the site, you agree to the use of cookies. [more info](#)

[Reply](#)

Accept



PS5 & XBOX Series X Giveaway

**Phong**

Where is the code or hex file for PIC 16F628A ???

sent to hex file email adress : [phongk8a1@gmail.com](mailto:phongk8a1@gmail.com)

thank

5 years ago

[Reply](#)

**Robin**

please provide the proteus file

5 years ago

[Reply](#)

**Electronics Lab**

Sorry, Proteus file isn't available.

5 years ago

[Reply](#)

**JOHN WILSON**

I made the circuit in proteus and LCD shows calibrating.....(No change after that )

5 years ago

[Reply](#)

**Vinicius Andrades**

share the Project, please!

4 years ago

[Reply](#)



**Taha**  
By continuing to use the site, you agree to the use of cookies. [more info](#)

Accept





Could you send me the Proteus file please? Thanks in advance  
[t90nassa@gmail.com](mailto:t90nassa@gmail.com)

4 years ago

[Reply](#)



**İbrahim**

Hex code .,?? [kiral96@hotmail.com](mailto:kiral96@hotmail.com) upload

4 years ago

[Reply](#)



**Electronics Lab**

Hex code is added on the downloads section above.

4 years ago

[Reply](#)



**Javier Garcia Holgado**

Muchas gracias amigo. Espero que funcione. Te volveré a escribir si consigo terminarlo.  
Thank you very much, my friend. Hope it works. I'll write again if I can finish it. I am not a professional.

4 years ago

[Reply](#)



**Yevgheny**

This meter works good with capacitors. When I switch it to inductors it shows me 'o  
Something wrong with my device or this is correct behaviour ? Thanks

4 years ago

[Reply](#)



By continuing to use the site, you agree to the use of cookies. [more info](#)

Accept



It seems correct behavior to me. But it's better to contact the author about it.

PS5 & XBOX Series X Giveaway

4 years ago

[Reply](#)



**Bittu**

is the hex file works same on other L c meter circuit ??

4 years ago

[Reply](#)



**Admin**

You need to burn the specific .hex file to PIC mcu

4 years ago

[Reply](#)



**Khoi**

The reed you use is replay? How many pin does it have? In Schematic I see It has 4 pins

4 years ago

[Reply](#)



**Admin**

The reed relay K1 controls switch K1, so actually it has 4 pins.

4 years ago

[Reply](#)



**Boo**

I need the code (maybe wirted .txt not .hex) Where I can find it?

3 years ago

[Reply](#)

By continuing to use the site, you agree to the use of cookies. [more info](#)

Accept



**Sarath**



Sir is reed relay a solid state relay

3 years ago

[Reply](#)



**Admin**

No, reed relay is a relay that uses magnetic field to control it's state.

2 years ago

[Reply](#)



**Vinicius Andrades From Brazil**

I had success using a reed relay 5V, SIP 1A05 (Pan-Chang) from eBay.

2 years ago

[Reply](#)



**Cuchero PI**

what did you do with two other relay legs

2 years ago

[Reply](#)



**Admin**

You just have to connect the coil contacts and the Normal Open conta

2 years ago

[Reply](#)



**Alireza**

excuse me sir please help me, what is reed relay in this circuit ??? please say all of s

2 years ago

[Reply](#) By continuing to use the site, you agree to the use of cookies. [more info](#)

Accept





**Mike**

A reed relay used in this project is something like this: <https://www.bc-robotic>

2 years ago

[Reply](#)



**Mohsen**

hi friend please say me about reed relay in this project.why use it.? can another thing

11 months ago

[Reply](#)



**Anonymous**

can we use 82uh resistor like inductor ?

9 months ago

[Reply](#)



**Anonymous**

no you can't use a resistor in place of an inductor. You can use an inductor of

9 months ago

[Reply](#)



**Hakan**

sorry for my English. i tried to say can we use 82uh inductor looks like as i understand from your reply i can use it right?

thank you very much

9 months ago

[Reply](#)

PS5 & XBOX Series X Giveaway

By continuing to use the site you agree to the use of cookies. [more info](#)



Yes, an inductor can look like a resistor.

Accept



9 months ago

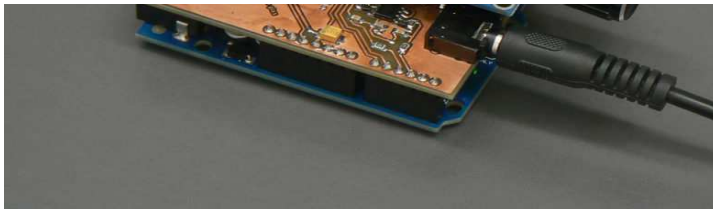
[Reply](#)

LEAVE A REPLY



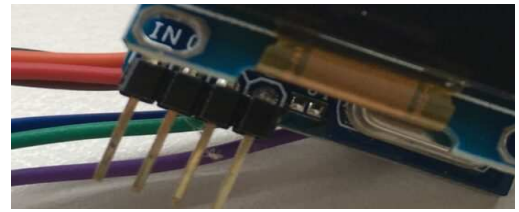
## RELATED PROJECTS





OLED display audio VU meter – AVR/Arduino project

[READ MORE](#)



Current Meter Using 0.96" OLED Display

[READ MORE](#)

PS5 & XBOX Series X Giveaway

By continuing to use the site, you agree to the use of cookies. [more info](#)

Accept



### Menu

- Community
- Blog
- Downloads
- Articles
- Links

### Projects

- Audio
- MCU Development
- Miscellaneous
- Power
- Oscillators – Timers

- Ard
- Mic
- Mo
- Ligt
- Ser

© ELECTRONICS-LAB.COM – 2020, WORK IS LICENCED UNDER CC BY SA 4.0



PS5 & XBOX Series X Giveaway

By continuing to use the site, you agree to the use of cookies. [more info](#)

Accept

