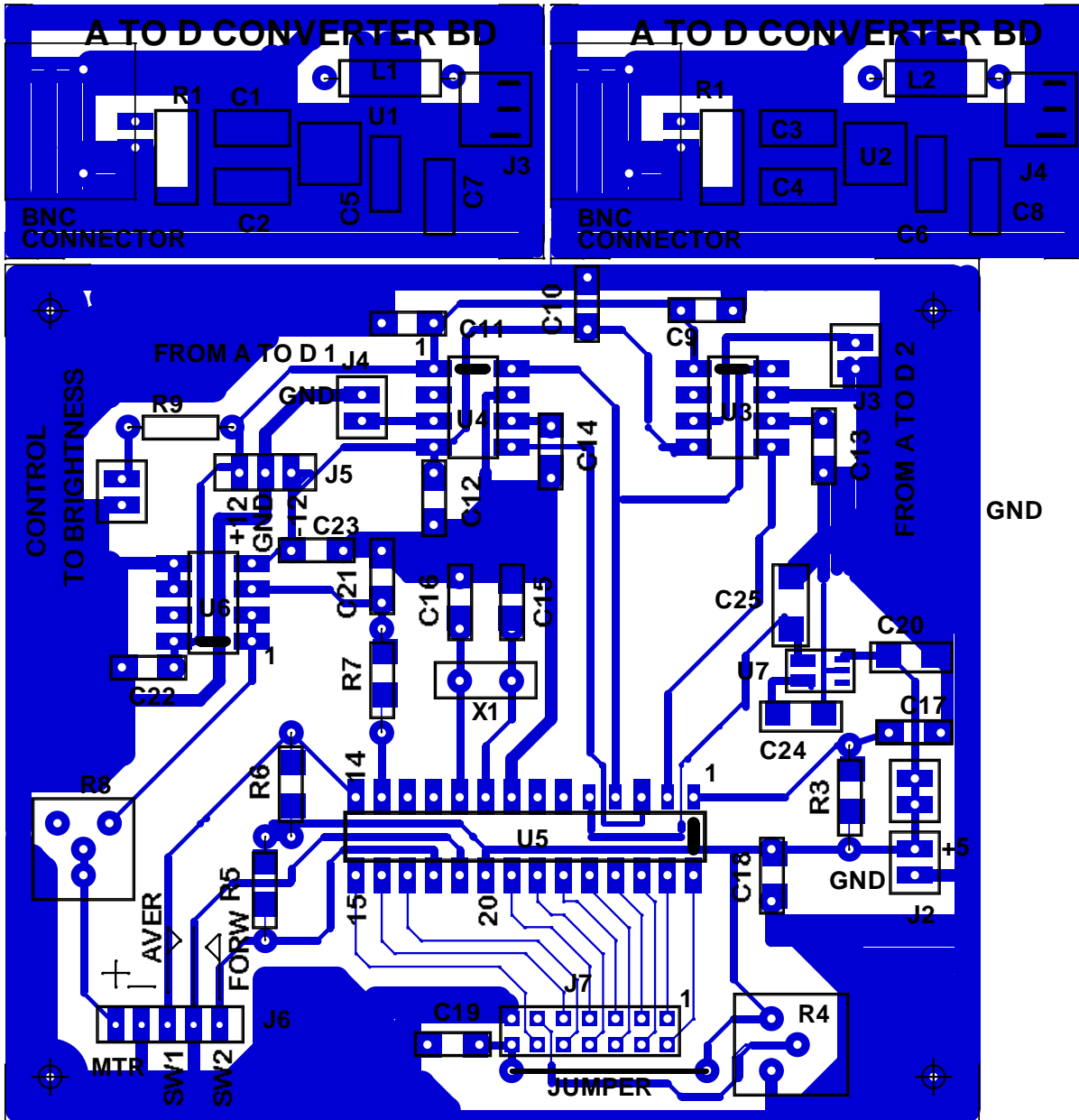


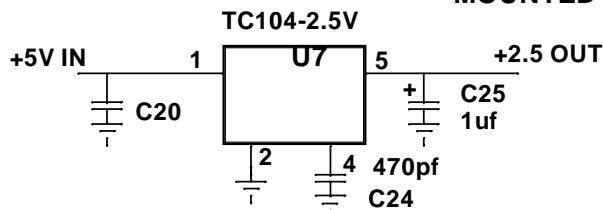
**QST JAN 11 WATTMETER**

TWO A TO D CONVERTER BD REQUIRED



**new 2.5 volt ref circuits**

NOTE: U7, C20, C24, AND C25 ARE MOUNTED ON THE BOTTOM OF THE BOARD



NOTE: THE SCHEMATIC IN QST SHOWS TWO R1 RESISTORS, AND NO R2 ONE OF THESE R1'S IS R2

THE PARTS LIST, R1 AND R2 AND THE SAME VALUE